

MAPLE COURT

Haatso-Atomic Road



Price GH¢ 3,877,551

About MAPLE COURT

With a wonderful cosmopolitan vibe, Maple Court is uniquely positioned moments from the delights of Legon Botanical Gardens and adjacent to the green open spaces of Ghana Atomic Energy.

With an eclectic and diverse mix of well-known retailers like Melcom, organic coffee shops, eateries and independent wine traders on Haatso high street, there is something for everyone right on your doorstep.

The interiors of the residences have been meticulously crafted to create harmonious living spaces. Living areas are free-flowing and well-proportioned, with exemplary attention to detail and design.

The private rooftop garden is the real jewel of this townhouse and has been designed to create a dynamic and diverse space for residents to relax, unwind and entertain.

With an integrated bar, barbeque area, Wi-Fi, bespoke seating areas and a plethora of greenery on the rooftop, residents will have their very own urban sanctuary.

Selling Off-plan!

Five luxury Townhouses,
Superior specification,
Standard family-size gym,
Intelligent central sound systems,
Amazon Alexa controls,
Miele and Siemens appliances,
Eco-friendly construction methods,
Private rooftop gardens with fantastic views,
Beautiful landscape with swimming pool,
Gated Community
Fire alarm system.

Amenities

- Public Garden
- Security
- Gym
- Laundry
- Green Areas
- AC
- School
- Outdoor Swimming Pool
- Preinstalled Kitchens

Location Map

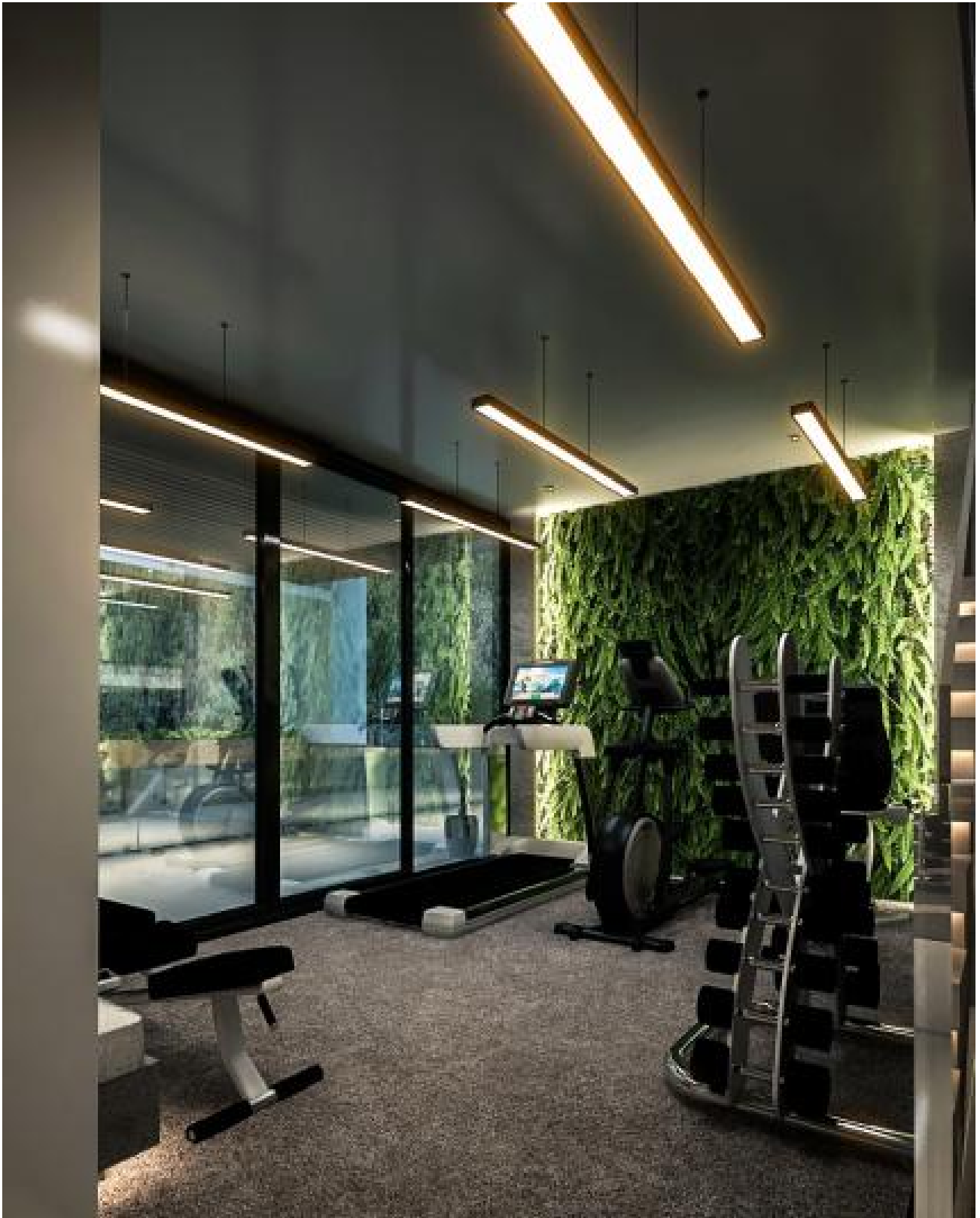


Gallery


























Available units for sale



Maple Court Unit

4 

4.5 

250 m² 

GH¢ 3877551.00